

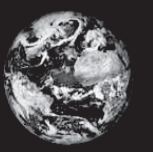


As an Earth Science Sponsor YOU will be helping the Mid-Hudson Valley Gem & Mineral Society, Inc. with some of the following Earth Science Activities:

- *Monthly Scientific Lecture by an Earth Science Specialist....Free and Open to the Public
- *Publish Monthly a mini-newsletter "The Rock Magnet" for Member Junior, Teen and Adults Groups
- *Publish Monthly an Educational and Award Winning Newsletter---the Garnet Gazette
 - *Maintain an Educational Web Site –[http//.mhvgms.org](http://.mhvgms.org)
 - *Provide Judges for School Science Fairs
 - *Award Certificates and Monetary Prizes to Earth Science Students
 - *Schedule Geological and Mineralogical Field Trips for Members
 - *Maintain a Lapidary Workshop for Society Members
- *Work with Gunnison Gem & Mineral Museum, Akin Free Library, Pawling
The Society has Officially Adopted the Gunnison Museum
- *Work with Vassar College Mineral Museum and Earth Science Program
- *Work in Area Schools Offering Earth Science Programs and Activities
[Wappingers, Arlington, Poughkeepsie Day and Randolph]
- *Offer an Annual Auction of Rocks, Minerals, Jewelry and Lapidary Items
- *Educational Exhibits – Vassar Mineral Museum, New York State Museum, Gunnison Museum at Annual Mid-Hudson Valley Gem & Mineral Show
- *Sponsor an Earth Science Questionnaire for Area High School Students- for extra school credit
 - *Offer Six Free Rocks and Minerals to Children at Annual Gem & Mineral Show
 - * Offer an Educational Exhibit of Fluorescent Minerals at Annual Show
- *Contributions to the NYS Museum Mineral Gallery for the Acquisition and Display of Minerals
- *Community Outreach Programs, Such as Poughkeepsie Kid's Expo at the Children's Museum, Hyde Park Community Days, Tilcon Neighborhood Open House, Stonykill Fall Festival, Dutchess & Ulster County Cubs/Boy and Girl Scouts
- *Provide Speakers for other Community and Earth Science Organizations
 - *Provide Mineral, Rock and Fossil Identification

**YOU are invited to attend our monthly meetings!
7:30 PM the third Friday of each month at the
Friends Meeting Hall**

249 Hooker Ave. Poughkeepsie, NY



The Mid-Hudson Valley Gem & Mineral Society, Inc.



invites **you** to become an.....**Earth Science Sponsor!**

This is a perfect time to seek individuals and businesses who wish to learn more about the Earth Science programs offered by the Mid-Hudson Valley Gem & Mineral Society. As you study the accompanying form enumerating our various activities you may wish to join in and help with a donation.

The Society suggests:.....**GIANT GARNET LEVEL** _____ \$50.+ **Medium Garnet Level** _____ \$ 25 **Small but mighty garnet level**, less than _____ \$25.

At the LARGE GARNET LEVEL OF SPONSORSHIP you will receive:

4 (Four) free passes for admission to the annual Gem & Mineral Show & Sale at the Dutchess County Fairgrounds Rhinebeck, New York -third weekend in September you may pick up your passes at the Gem & Mineral Admission booth. Our Show will have more than 30 dealers of gems, minerals, jewelry, fossils, meteorites and books. There will be educational exhibits, fluorescent mineral display and six free rocks for children. High School students will be completing a questionnaire for extra credit.

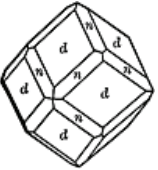
At all levels of Sponsorship your: Business will be advertised with a poster at the show

Business information will be placed on our Society's web site -- <http://mhvgms.org>.

Business will be listed as a Sponsor in the October issue of the "Garnet Gazette"

At all levels of Sponsorship you : Become an e-mail newsletter member of the Mid-Hudson Valley Gem & Mineral Society, Inc.

Please join our effort to educate children and the general public about the Earth Sciences and sign up today!
We wish to show our gratitude by advertising your business and offer you more information about our adventures in the Earth Sciences.



MHVG&MS



Your Sponsorship Level  **GIANT** _____ **Medium** _____ **Small but mighty** _____

Name _____

e-mail address _____ phone _____

Business Name: _____

Business Address: _____ phone _____

Business Web Site: _____

Please make out your check to MHVG&MS and send this portion of page with check to:
Mid-Hudson Valley Gem & Mineral Society, P. O. Box 3636, Poughkeepsie, NY 12603

For additional information please contact:: Stephanie LaRose at slarose@gmail.com;