

the Rock Magnet

For Rockhounds Juniors, Teens & "Greyhounds"

Basalt

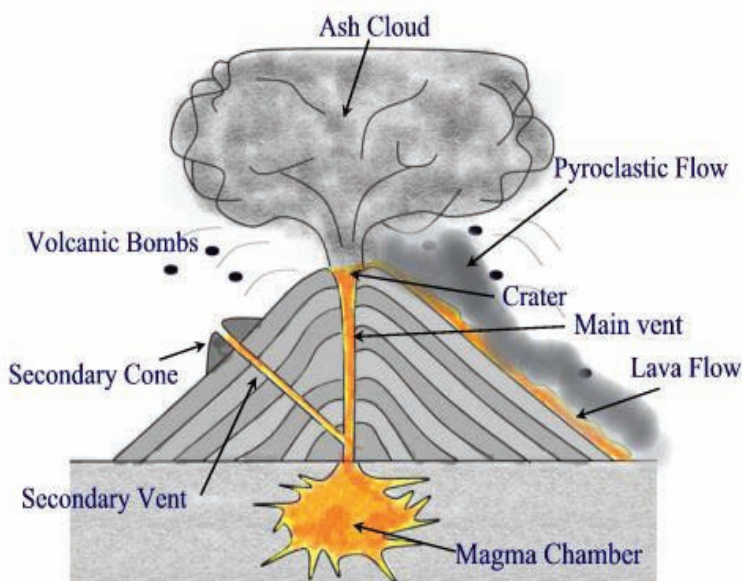
MHVG+MS

Volume 1 No. 4 April 2011

editor: Mrs. Rock

Let's Talk Igneous !

If liquid rock flows or is blown out of a volcano it is called : E ___ TR ___ S ___ E. Volcanic glass is called ___ B ___ ID ___ AN. It isn't a rock because it cooled so fast it could not make crystals. In Hawaii, the volcanoes are shield shaped because the L ___ V ___ is very liquid. This melted rock is B ___ S ___ T. Lava that shoots out under pressure covering the cone with sharp cinders is called ___ C ___ R ___ A. Many volcanoes explode violently releasing volcanic ash and volcanic bombs as a pyroclastic flow. Magma that does not reach the surface, crystallizing deep in the Earth is known as ___ TR ___ SI ___ E Rock. GR ___ N ___ TE is an intrusive rock.



Main Features of a Volcano

Basalt,
Caldera,
Cinder Cone,
Extrusive,
Gabbro
Granite,
Igneous,
Intrusive,
Lava,
Magma,
Melt,
Obsidian,
Pumice,
Pyroclastic,
Rhyolite,
Scoria,
Vent,
Volcanic

Amaze
your Family,
Friends & Teachers
by
Knowing
and Using
Properly these
Igneous words!

It is OK to use the
Dictionary!
Ask your Parents
for Permission to
Use the Internet!
ask
a Club Expert!





KNOW SOME FAMOUS VOLCANOES!



Which volcano is known for its perfect cone?



Mt. Fuji - Japan
Stratovolcano



Mt. Mayon - Philippines
Stratovolcano



Mauna Loa - Hawaii
Shield Volcano



Mt. Vesuvius - Italy
Stratovolcano



Mt. Llullaillaco -
Chile-Argentina
Stratovolcano



Mt. Krakatoa - Indonesia
Stratovolcano



Mt. Etna - Sicily
Stratovolcano



Mount St. Helens -
Washington State - US
Stratovolcano

Where is the largest volcano in our Solar System?



Clue: 4th planet

All Igneous Rock is created Out of Melted Rock!

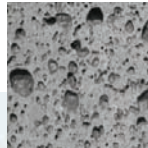
Extrusive

Up and Out!



Scoria

gas pockets



Pumice



Basalt



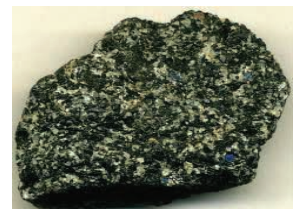
Rhyolite

Intrusive

Deep Down & Under!



Granite



Gabbro
larger crystals